

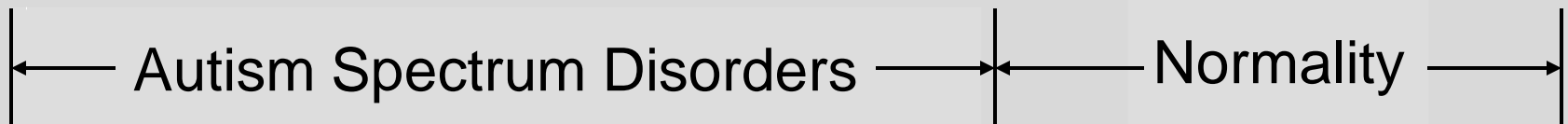
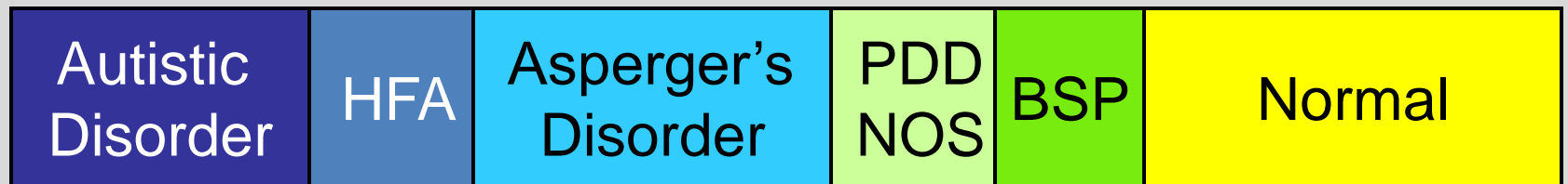
# FORENSIC-PSYCHIATRIC ISSUES OF ADOLESCENTS WITH ASPERGER'S DISORDER

J. Arturo Silva, M.D.

---

ASAP Annual Meeting, Boston  
Massachusetts, March 28, 2008

# NORMALITY AND AUTISM SPECTRUM DISORDERS



# NORMALITY AND AUTISM SPECTRUM DISORDERS

← VIOLENT BEHAVIOR →



# AUTISM SPECTRUM DISORDERS



Socialization  
deficits



Communication  
deficits



Imagination  
deficits

# DSM-IV-TR GROUP A AND B DIAGNOSTIC CRITERIA FOR ASPERGER'S DISORDER

---

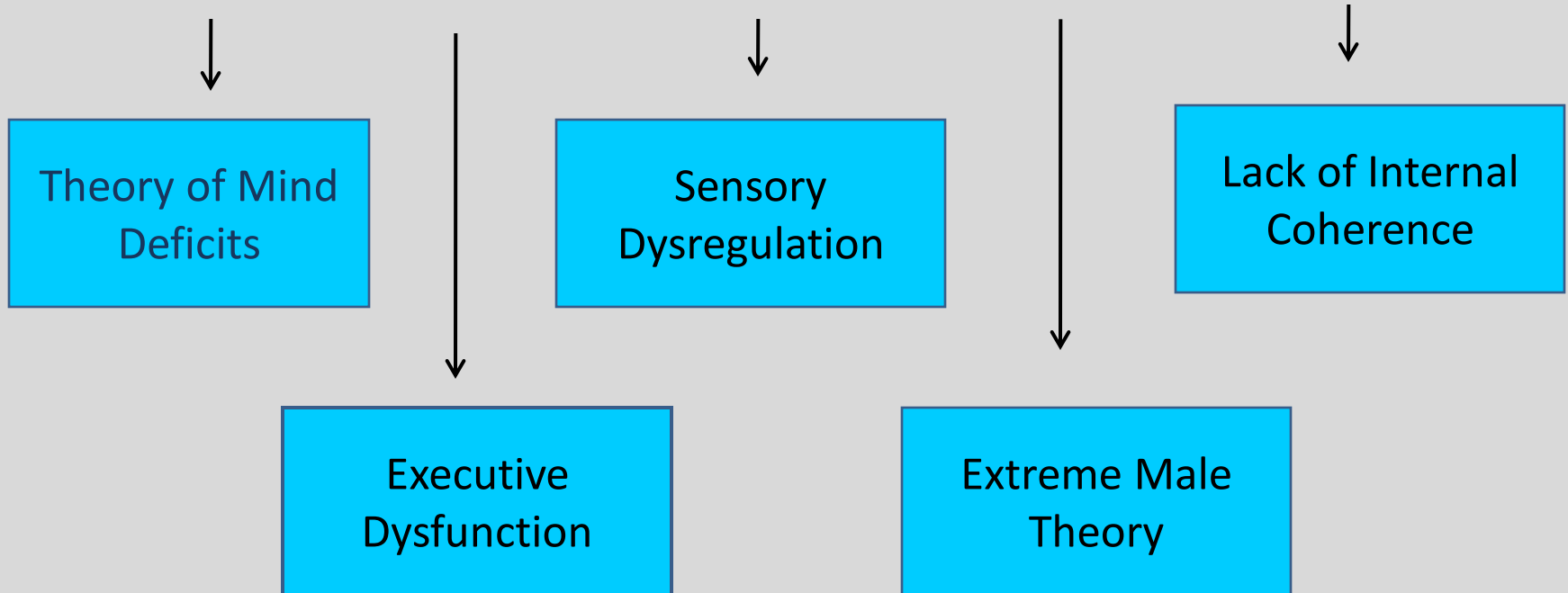
## Group A

1. Social reciprocity deficits
2. Communication Deficits

## Group B

3. Abnormal interests and behaviors

# AUTISM SPECTRUM DISORDERS



# ANTISOCIAL BEHAVIORS

---

1. Serious assaults
  2. Single homicides
  3. Serial homicide
-

# ASSOCIATION BETWEEN AUTISM SPECTRUM DISORDERS AND VIOLENCE

1. No positive association
2. No negative relation
3. Violent behavior in autism
4. Subset of persons with higher functioning autism who become involved in criminal behaviors

# DSM-IV-TR DIAGNOSTIC EVALUATION

---

1. DSM-IV-TR oriented interviews at a minimum
  2. Developmentally oriented interviews
  3. SCID-I for Axis I Mental Disorders
    - 3a. Asperger's Disorder and Related Mental Disorders
    - 3b. Conduct Disorder, Related Disorders and Conditions
    - 3c. SCID-II for Personality Disorder assessment
-

# DIAGNOSTIC EVALUATION

---

4. Autism Diagnostic Interview (ADI-R)
  5. Autism Quotient Adult and Adolescent Versions AQ
  6. Other Screening Instruments
  7. Cognitive testing: IQ, executive dysfunction, Visuo-constructional abilities
-

# DIAGNOSTIC EVALUATION

---

8. DSM-III-R Sadistic Personality, psychological stressors analysis, cultural formulation, DSM-IV-TR defense mechanisms
  9. Vocational interests and Occupational History: Clinical interview; Systemization Quotient (SQ-R); Cambridge University Obsessions Questionnaire(CUOQ)
  10. Personality testing: Millon, SCID-II Questionnaire
-

# AUTISM SPECTRUM DISORDERS



**Theory of  
Mind Deficits**



Executive  
Dysfunction



Sensory  
Dysregulation



Extreme Male  
Theory



Lack of Internal  
Coherence

MENTALIZING  
THEORY OF MIND  
INTENTIONAL STANCE

---

Ability to assess  
the mental states  
of others and of the self

# AUTISM SPECTRUM DISORDERS

**Mentalizing  
Deficits**

Sensory  
Dysregulation

Lack of Internal  
Coherence

Executive  
Dysfunction

Extreme Male  
Theory

# MENTALIZING COMPONENTS

---

1. Cognitive
  2. Affective
  3. Perceptual
-

# TESTING OF MENTALIZING ABILITIES

---

## I. Emotional/Social Intelligence

1. BarOn-Emotional Quotient Inventory
2. BarOn-Emotional Quotient Interview
3. Thematic Apperception Test

## II. Empathy

1. Empathy Quotient
  2. Autism Quotient
-

# ASSESSMENT OF MENTALIZING ABILITIES FACE PROCESSING TESTING

---

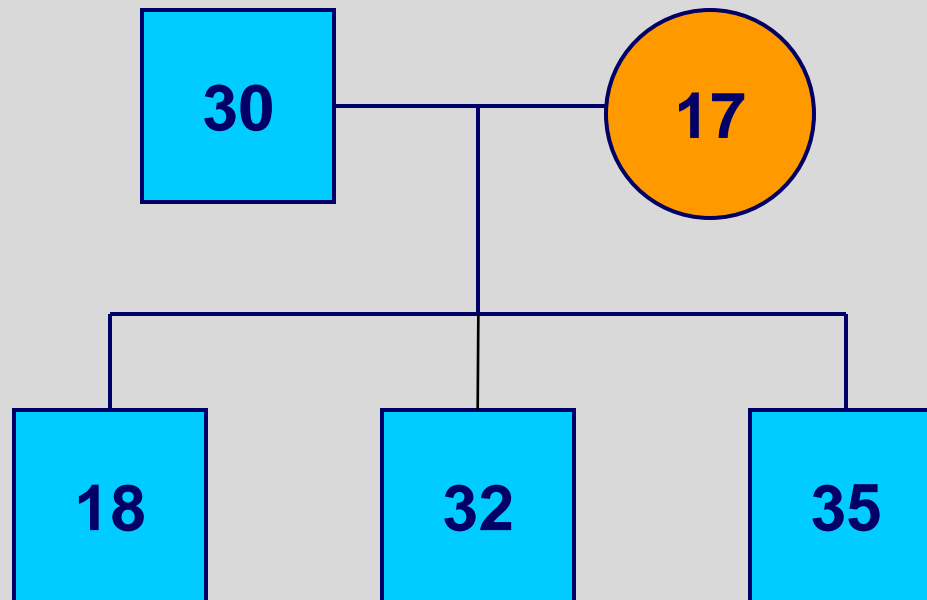
READING THE MIND IN THE EYES TEST

# GENETIC AND ENVIRONMENTAL CAUSES

---

1. Males account for 85% of AD
  2. Heritability is estimated at 0.9
  3. Environmental factors unclear
-

GENETIC AND ENVIRONMENTAL CAUSES  
AUTISM QUOTIENT SCORES  
IN TWO GENERATIONS



# AUTISM SPECTRUM DISORDERS

**Mentalizing  
Deficits**

Sensory  
Dysregulation

Lack of Internal  
Coherence

Executive  
Dysfunction

Extreme Male  
Theory

# CASE 1

---

James is an 18-year-old Caucasian male  
Referred for forensic-psychiatric assessment

1. killing a 43 year old man that he did not know
  2. Very isolative during childhood and early adolescence
  3. Related to others on basis of few interests
  4. Rigid expectations of others with following rules
  5. History of cruelty to animals
-

# AUTISM SPECTRUM DISORDERS



Mentalizing  
Deficits



Executive  
Dysfunction



Sensory  
Dysregulation



**Extreme Male  
Theory**



Lack of Internal  
Coherence

# EXTREME MALE THEORY

---

EMPATHY

FEMALES > MALES

SYSTEMIZATION

MALES > FEMALES

---

The Essential Difference by Baron-Cohen, 2003

# EXTREME MALE THEORY

CONDITION	E	S
-----------	---	---

---

Normality	nl	nl
Asperger's Disorder	L	H
Schizoid PD type 2	L	H
Schizoid PD type 1	L	nl
Other conditions	nl	L

---

# CASE 1

---

James is an 18-year-old Caucasian male  
Referred for forensic-psychiatric assessment

1. killing a 43 year old man that he did not know
  2. Very isolative during childhood and early adolescence
  3. Related to others on basis of few interests
  4. Rigid expectations of others with following rules
  5. History of cruelty to animals
-

# CASE 1

---

James is an 18-year-old Caucasian male  
Referred for forensic-psychiatric assessment

1. killing a 43 year old man that he did not know
  2. Very isolative during childhood and early adolescence
  3. Related to others on basis of few interests
  4. Rigid expectations of others with following rules
  5. History of cruelty to animals
-

# AUTISM SPECTRUM DISORDERS



**Mentalizing  
Deficits**



Executive  
Dysfunction



Sensory  
Dysregulation



Extreme Male  
Theory



Lack of Internal  
Coherence

# DECONSTRUCTIVE NATURE OF THE PARAPHILIAS

# AUTISM SPECTRUM DISORDERS



Mentalizing  
Deficits



Executive  
Dysfunction



Sensory  
Dysregulation



Extreme Male  
Theory



**Lack of Internal  
Coherence**

# CENTRAL COHERENCE

---

The process by which the person achieves a sense that experience is fundamentally holistic

## CASE 2

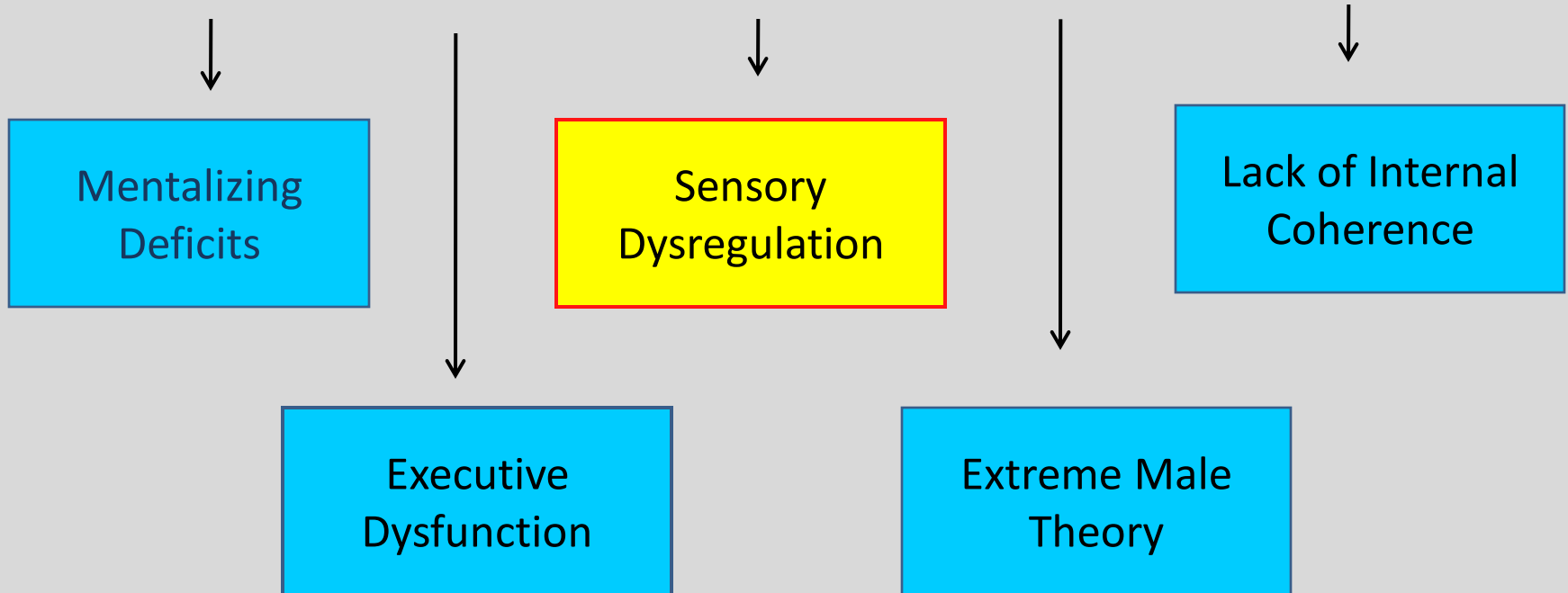
---

Frank is a 14-year-old Caucasian male

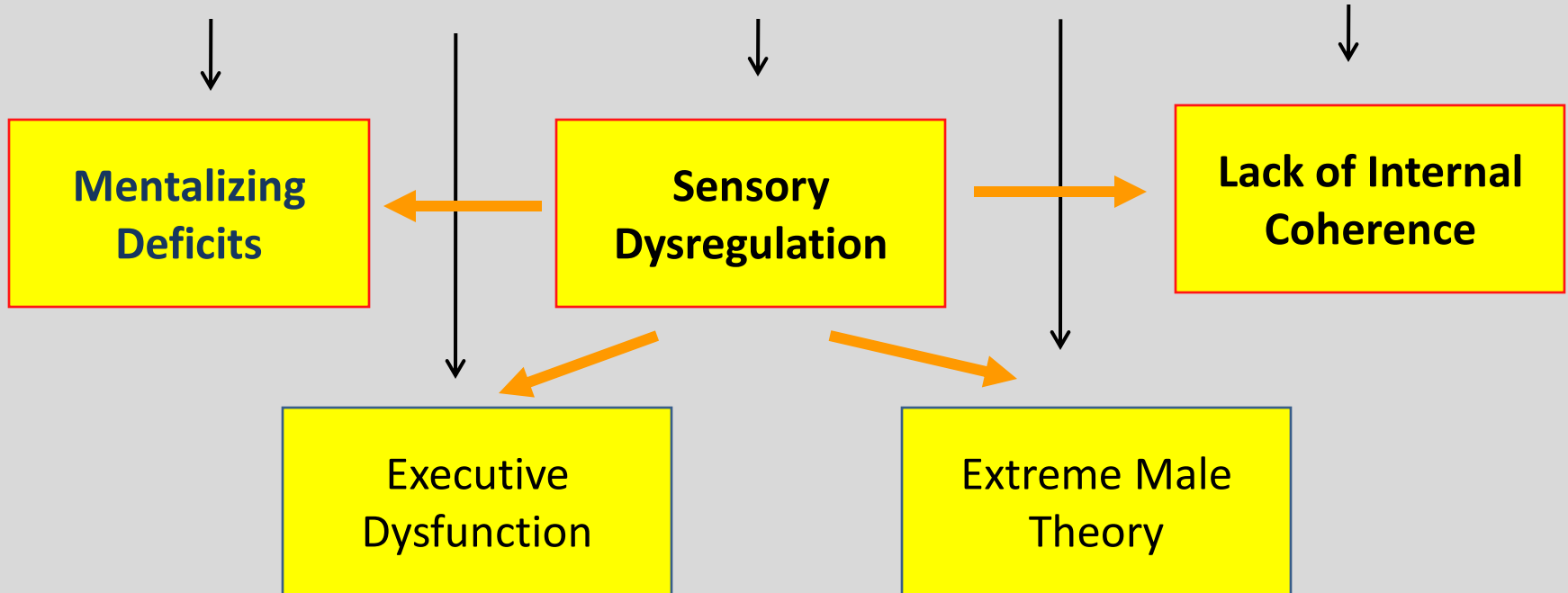
Referred for assessment:

1. Verbal hostility
  2. Inappropriate social behavior
  3. Interests involving coercive and necrophilic sexuality
-

# AUTISM SPECTRUM DISORDERS



# AUTISM SPECTRUM DISORDERS



# CHARACTERISTIC OF AUTISM

---

**A** basic defect involving  
the processing of change

---

# PRIMARY VERSUS SECONDARY SYMPTOMS IN AUTISM SPECTRUM DISORDERS

---

## **PRIMARY FEATURES**

Perceptual processing

Emotional signaling

Action sequencing

## **SECONDARY FEATURES**

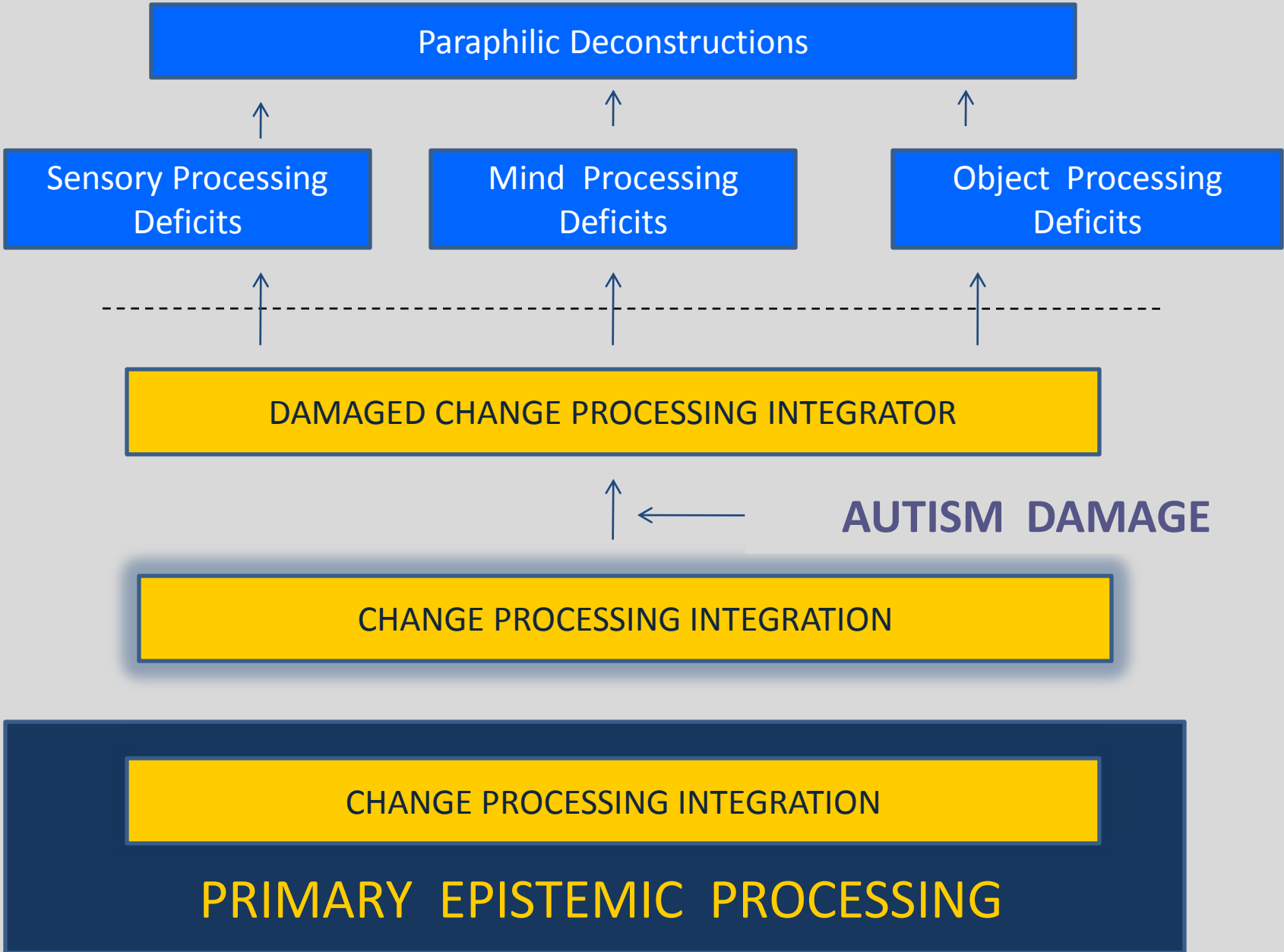
Perseveration

Self-absorption

Self-stimulation

---

The First Idea by Greenspan and Shanker, 2004



Paraphilic Deconstructions

Sensory Processing Deficits

Mind Processing Deficits

Object Processing Deficits

DAMAGED CHANGE PROCESSING INTEGRATOR

AUTISM DAMAGE

CHANGE PROCESSING INTEGRATION

CHANGE PROCESSING INTEGRATION

PRIMARY EPISTEMIC PROCESSING

Moral Judgment

Remorse

Empathy



MENTALIZING

**THE END**